

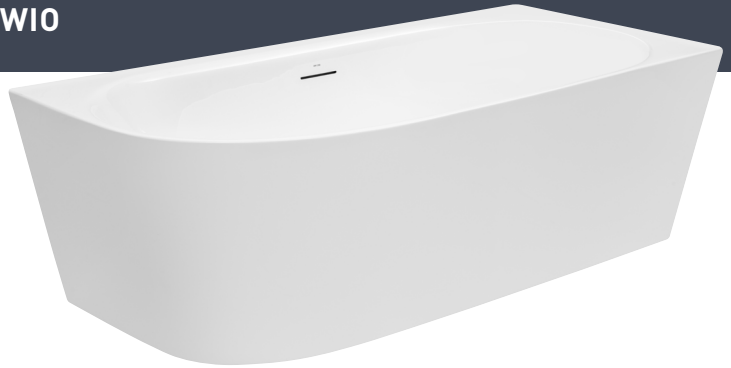
# Natalia Back-to-Corner Freestanding Bath

with Integrated Overflow [left or right corner]



Product Code: **NA1700LWIO / NA1700RWIO**

The Natalia features a space-saving, back-to-corner freestanding design that seamlessly integrates into corner walls, ensuring a watertight, easy-to-clean seal around the bath rim. It also boasts a sleek, integrated overflow for a refined finish.



- Australian Standard 1172.5:2019
- Integrated Overflow
- Adjustable self-supporting feet
- Lumbar support
- Internal steel support frame
- Left or right corner available



## PRODUCT SPECIFICATIONS

<b>Colour:</b>	High gloss white
<b>Material:</b>	Premium sanitary grade acrylic
<b>Length:</b>	1700mm
<b>Width:</b>	780mm
<b>Height:</b>	610mm
<b>Capacity:</b>	137L [200mm below the bath rim]
<b>Bath Type:</b>	Back-to-corner freestanding
<b>Waste Position:</b>	Centre
<b>Net Weight:</b>	40kg
<b>Warranty:</b>	10 years* (refer to decina.com.au)

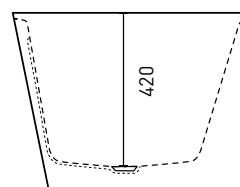
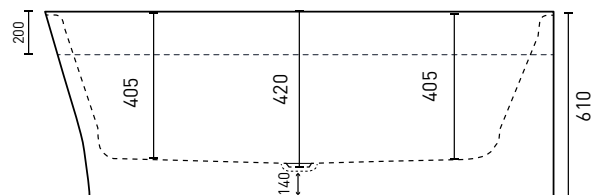
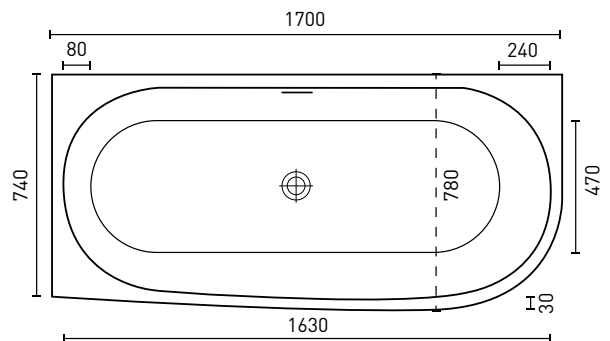
## OPTIONAL ACCESSORIES

### For straight through waste connections

- 40mm Removable Pop-Down Waste W/O Chrome **OWA018**

### For use when a waste connector is required

- Pop-down waste & flexi connector *Chrome* **OWA010**
- Screw pack for bath pop down **OWA015**  
(necessary for baths with overflow wall thickness greater than 12mm)
- Sia headrest *Black Curved* **SY242-B**



TILE BEAD

**DECINA**  
DISCOVER INDULGENCE

[f](#) [i](#) [p](#) **DECINA.COM.AU** 1300 DECINA

\*Warranty T&Cs apply, visit [decina.com.au](http://decina.com.au) Decina reserves the right to change specifications without notice. Due to manufacturing tolerances dimensions may vary +/- 5mm. We recommend installation does not start until after delivery. Please confirm all particulars prior to purchase, call 1300 DECINA or visit [decina.com.au](http://decina.com.au)