

Instruction Manual CASCADE

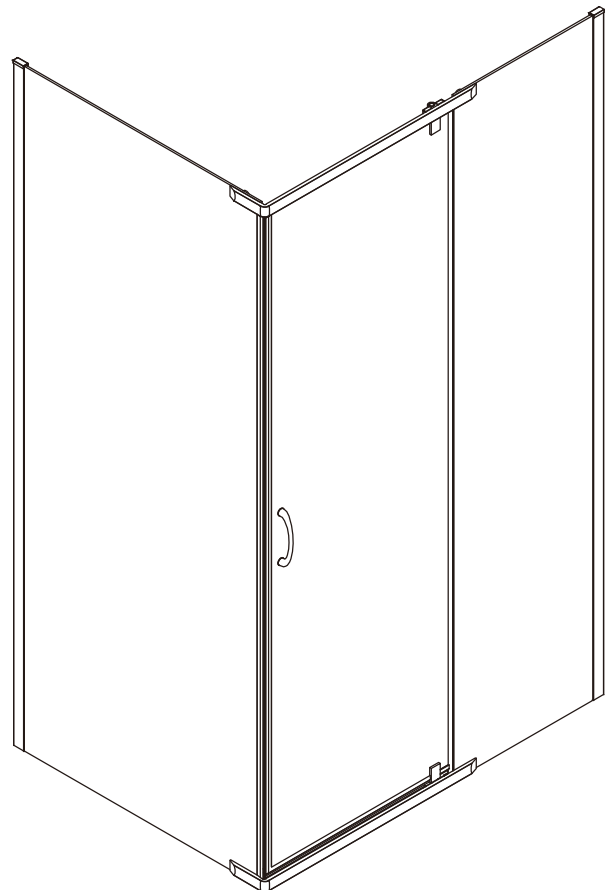
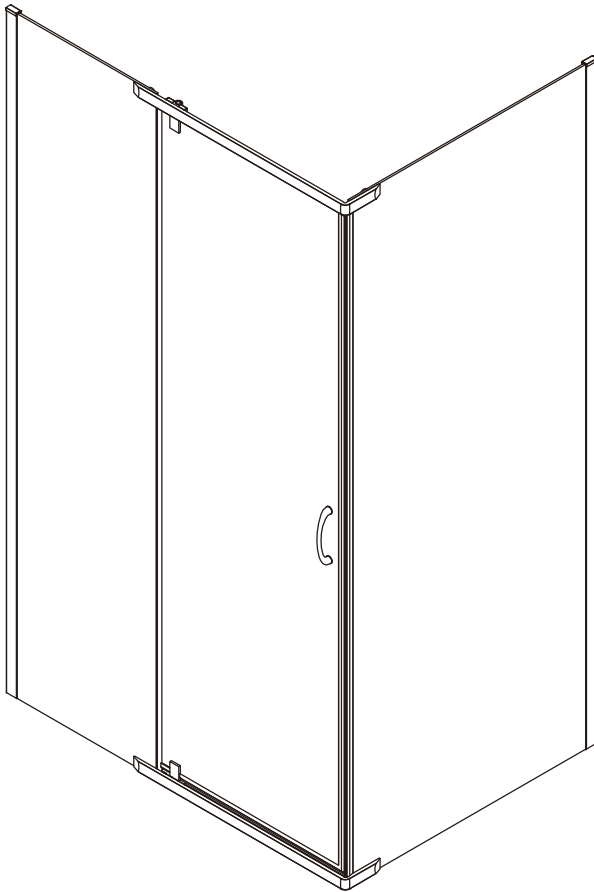
900x900 (6mm)

1000x1000 (6mm)

1200x900 (6mm)



With Decina's Exclusive EZI Clean Coating



Important Pre-Installation Information

- Please read this entire instruction book before commencing installation.
- A licenced tradesman must be used for the installation.
- Ensure there is a gasket between all glass and metal components.
- Leave the plastic protectors on the glass corners until the last possible moment and handle with care.
- Instructions to install the shower tray are included with the shower tray.
- In cold climates, warming the gaskets and seals with hot water or a hairdryer will assist installation.
- On symmetrical pieces of glass, the EZI Clean coating is only on one face. This face will have a sticker on it to identify it. This side must be installed on the wet side of the shower.

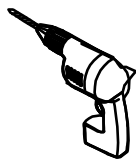
Maintenance

- The use of harsh or abrasive cleaners will cause deterioration of the EZI Clean coating. If water alone is not enough to clean the glass, Decina recommends the use of mild detergent solutions only.

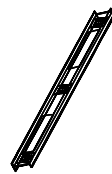
Tools Required



Silicone Sealant



Drill



Level



Rubber Mallet



Pencil



Phillips Screwdriver



Tape Measure



Cutting Pliers



Utility Knife



6mm (1/4") and
3mm (1/8") Drill Bits



**
Safety Goggles

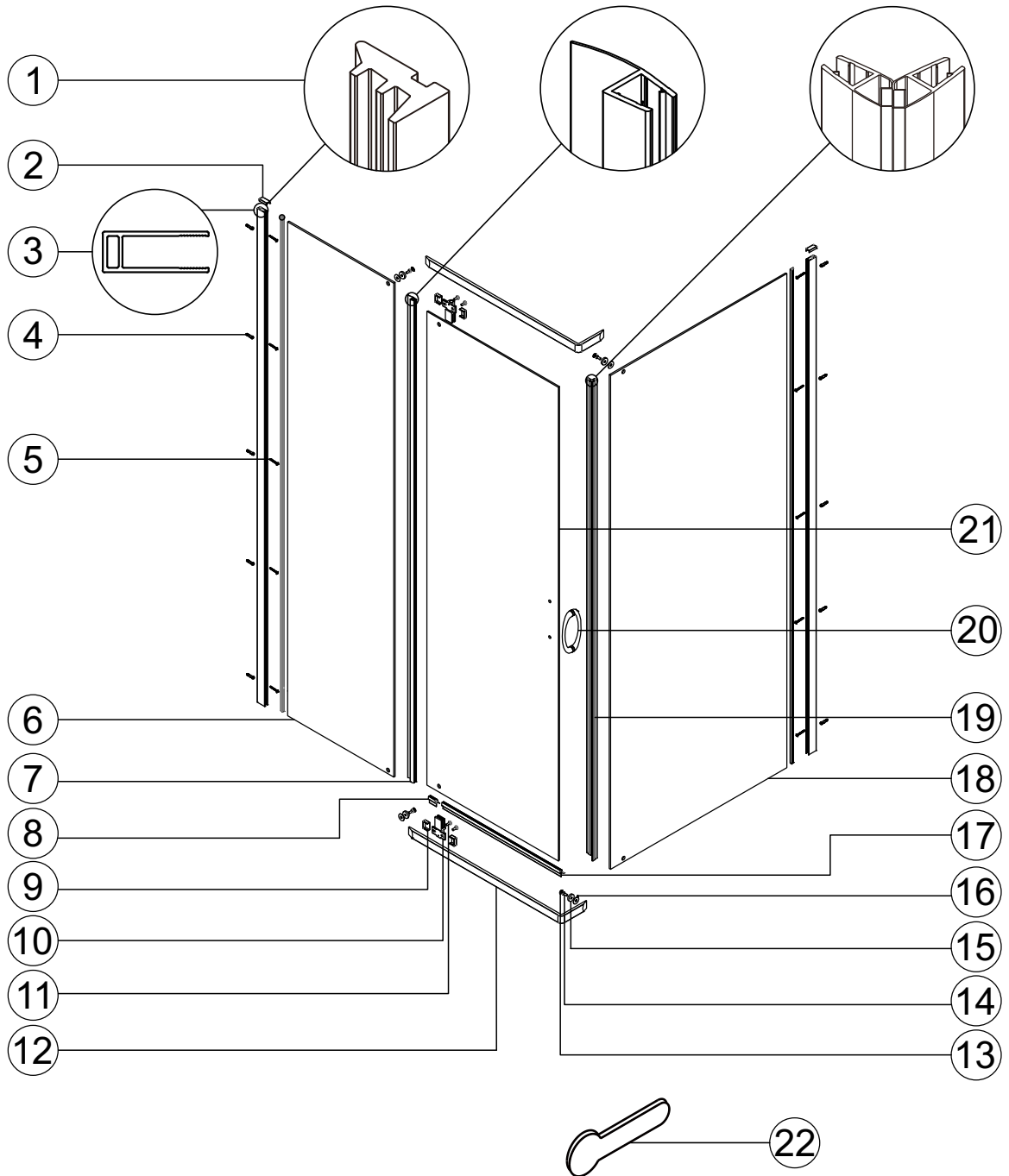


**
Gloves

** Use the correct type of drill bit for the material being drilled, with 6mm required for anchor fixing and 3mm used for screwing directly into the wall studs.*

*** As with all toughened glass, take care while handling and wear safety goggles and gloves for personal protection.*

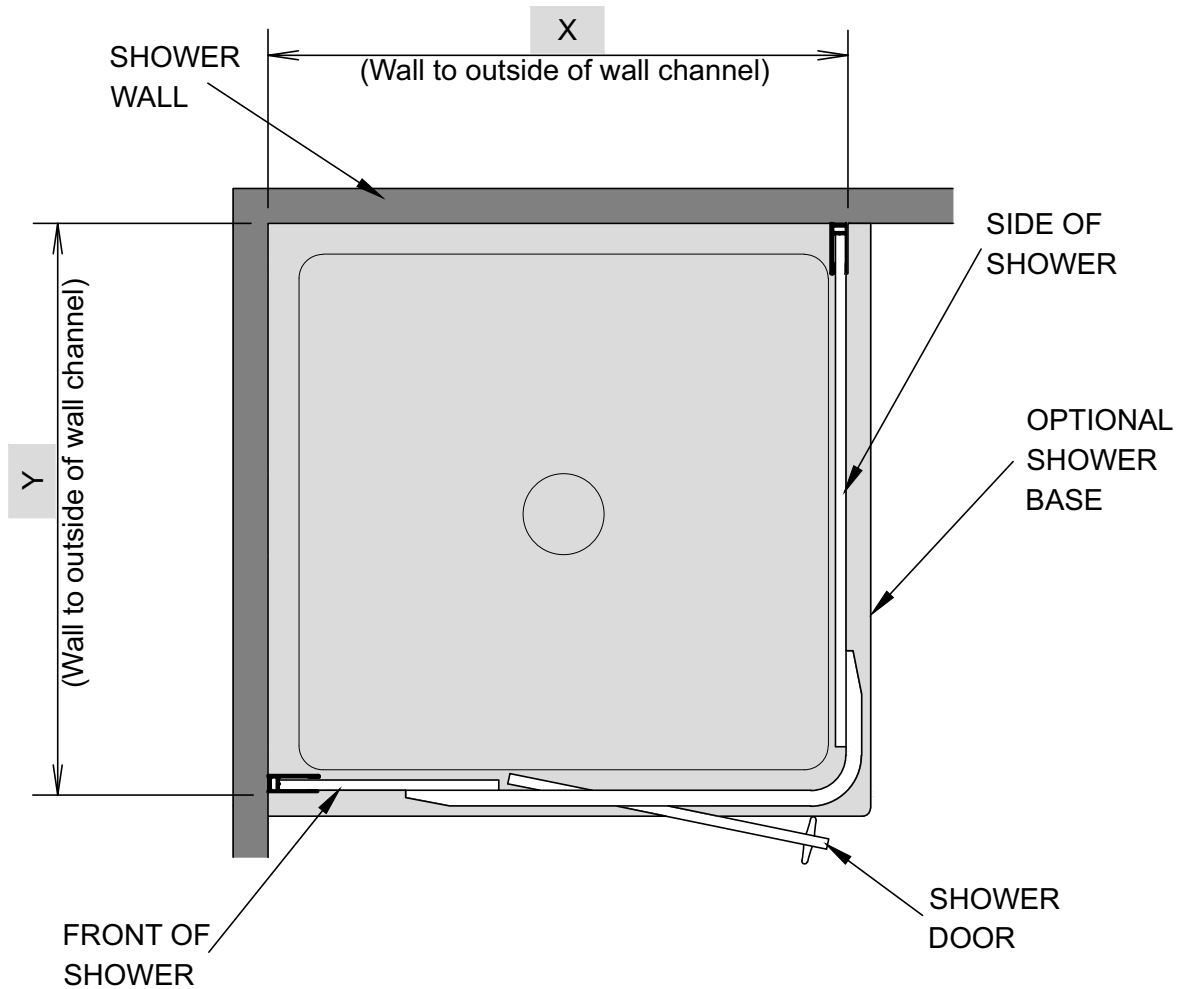
Parts List



1. Wall Channel Gasket	2 pcs	12. Brace	2 pcs
2. Channel Cap	2 pcs	13. Allen Head Screw Cover	6 pcs
3. Wall Channel	2 pcs	14. Countersunk Allen Head Screw	4 pcs
4. Wall Anchor	10 pcs	15. Clamping Washer	4 pcs
5. Phillips Head Screw ST4x40	10 pcs	16. Plastic Washer	8 pcs
6. Front Panel Glass	1 pcs	17. Long Drip Strip	1 pcs
7. Hinge Side Door Gasket	1 pcs	18. Side Panel Glass	1 pcs
8. Short Drip Strip	1 pcs	19. Magnetic Door Seal	2 pcs
9. Hinge Back Cover	4 pcs	20. Handle	1 pcs
10. Hinge Assembly	2 pcs	21. Door Glass	1 pcs
11. Allen Head Screw M6x10	6 pcs	22. Gasket Insertion Tool	1 pcs

Determining Wall Channel Location

When commencing step 1 on the following page, please refer to this drawing and the tabulated dimensions for your size of system to assist in the correct location of the wall channels.

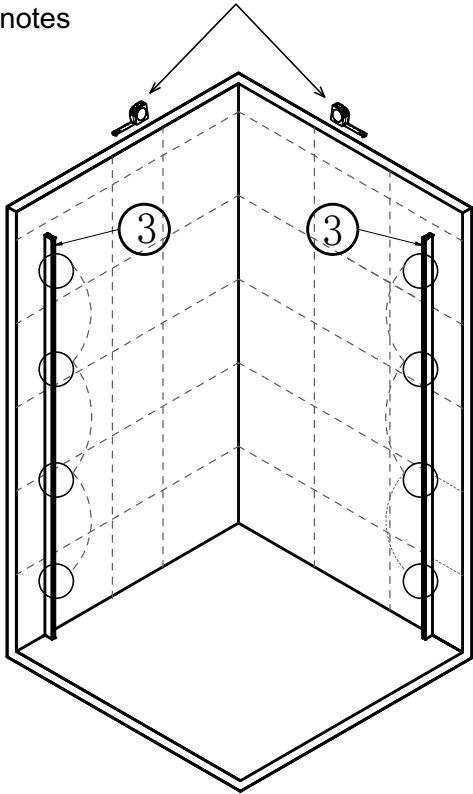


Screen Size	X (mm)	Y (mm)
900 x 900	842-857	842-857
1000 x 1000	942-957	942-957
1200 x 900	1142-1157	842-857

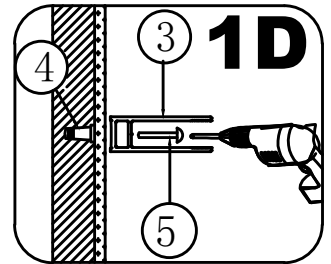
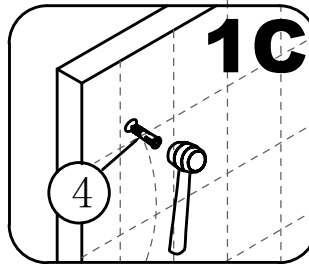
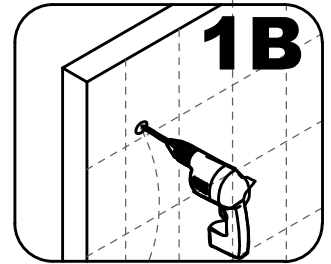
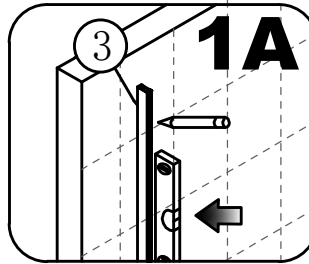
- Locate the size of your shower screen in column 1 and use the value for X and Y on the same line to find the distance from the shower wall to the outside edge of the wall channels. If a shower base is fitted, do not measure from the edge of the shower base to determine the position of the wall channel.
- If your wall and shower base are not at right angles the glass will not push fully into the wall channel at the top or bottom. This misalignment is acceptable if not exceeding 15mm, however the overall shower size will then increase by the amount of this misalignment.
- If the screen footprint does not turn out square while the aluminium braces are being installed (step 3), the glass can be pulled out from the full depth of the channel by up to 15mm to assist in squaring.

1

Important - See page 4 for the dimensions and notes



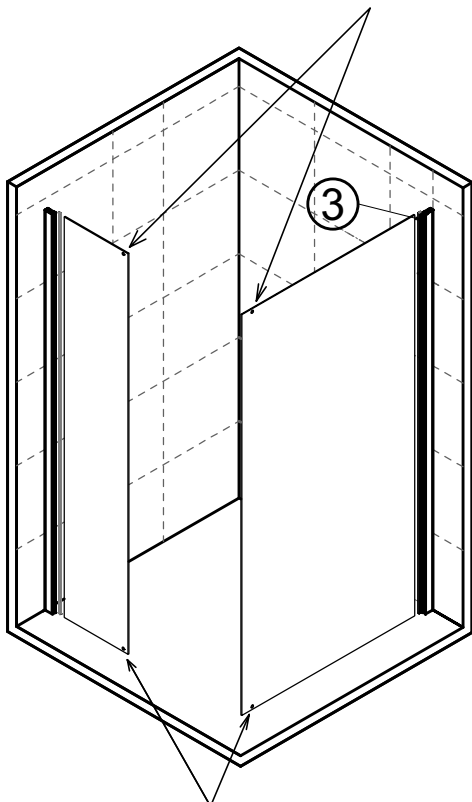
Install the wall channel.



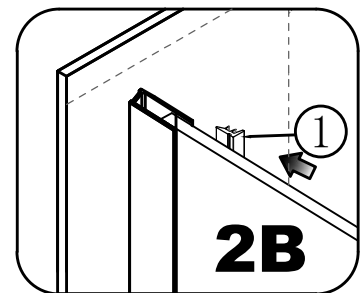
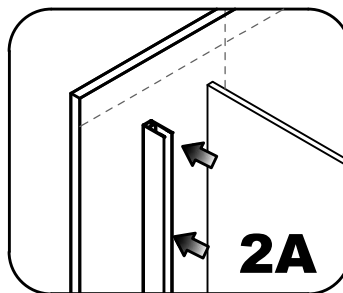
2

Important: Leave the corner glass protectors on until the last possible moment.

Note Hole Locations

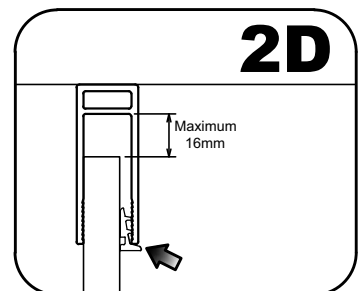
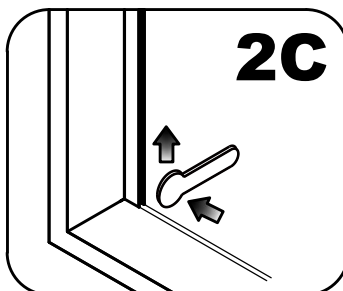


Install the fixed panel glass. There is a sticker to indicate which side has the EZI Clean coating. This side must go on the inside of the shower.



Start at the bottom and work up with the supplied roller tool.

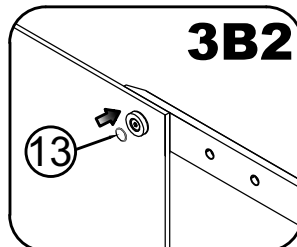
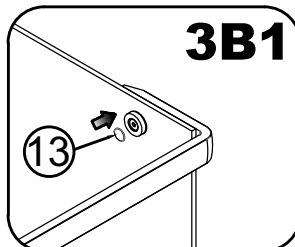
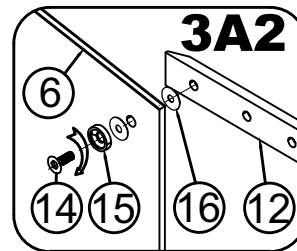
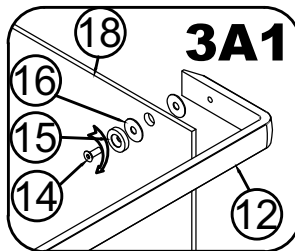
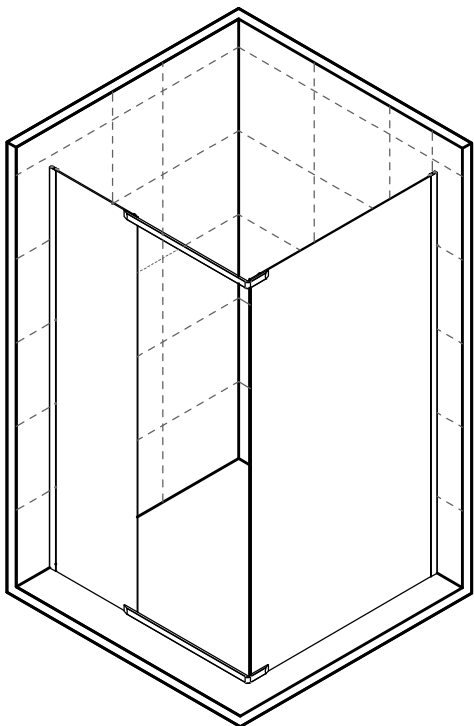
Important: Seal must be fully inserted.



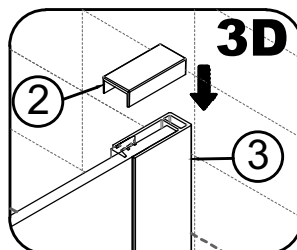
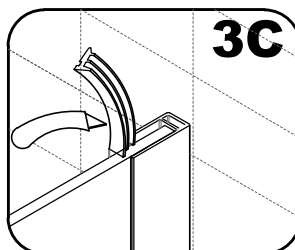
Note Hole Locations

3

For white screens, run the screw in and out of the threaded holes in the brace before fitting.



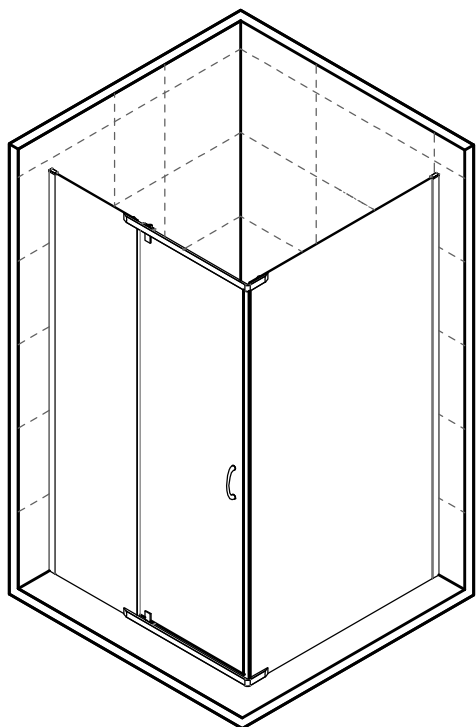
Fit cap to the wall channels.



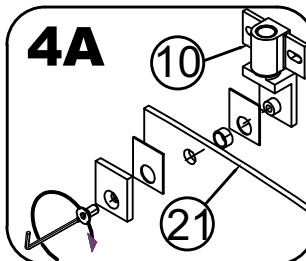
4

Important: Leave the corner glass protectors on until the last possible moment.

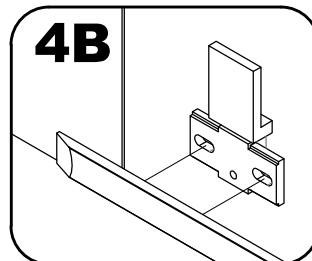
Like the side panels, there is a sticker on the door to indicate which side has the EZI Clean coating.



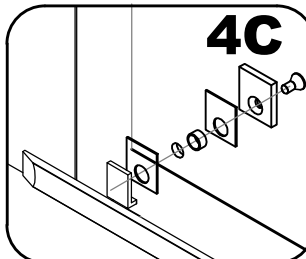
Install the top hinge to the door.



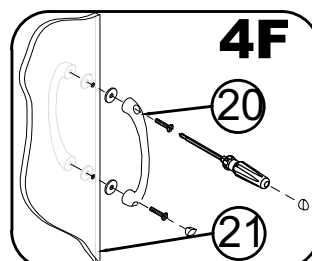
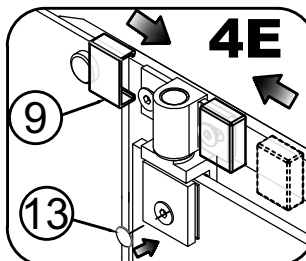
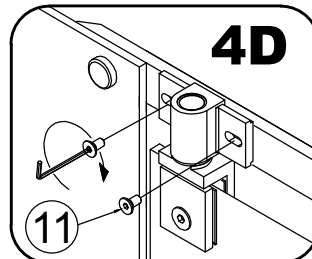
Install the bottom door hinge on the brace.



Install the door onto the bottom hinge.

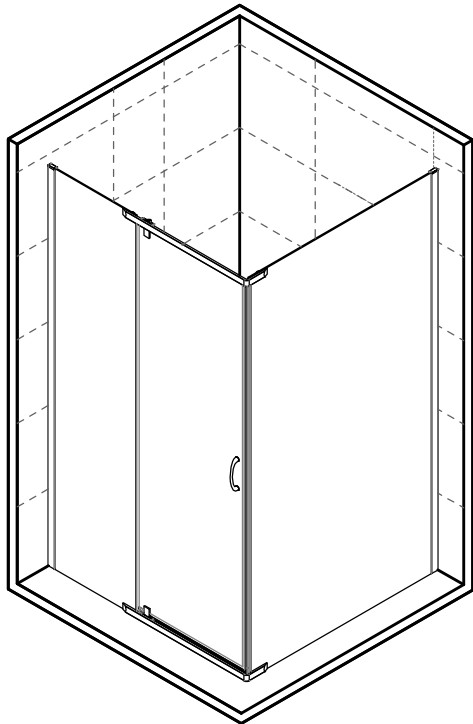


Attach the top hinge to the top brace.

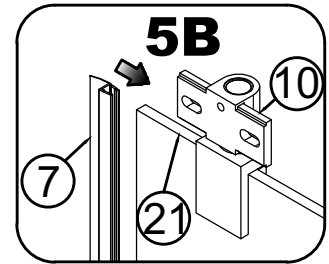
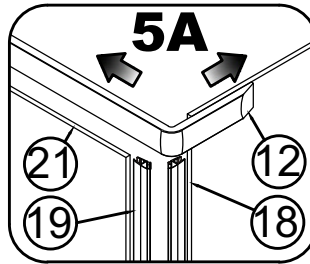


5

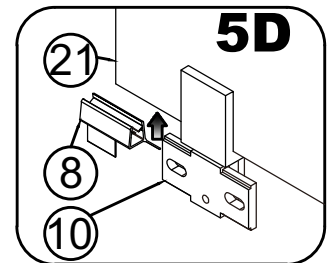
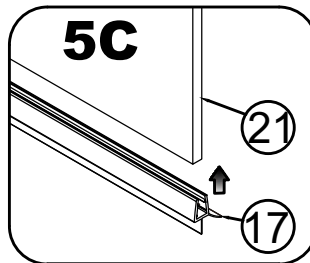
Note steps 5B to 5D show the seals being installed on the door with the frame removed for clarity.



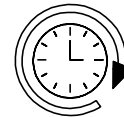
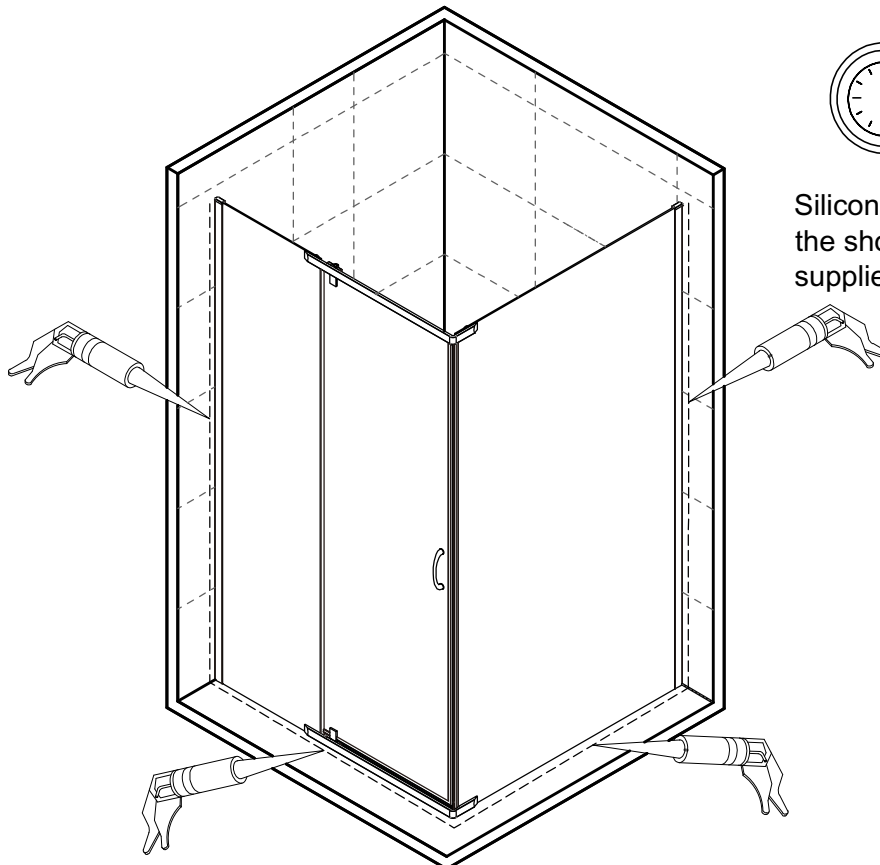
Cut the seals to the correct length before fitting.



Install the vertical door seals along the whole height of the door, and fit the bottom drip strips in between.



6



24 h



Silicone inside and outside of the shower (silicone not supplied).