

DECINA

DISCOVER INDULGENCE

CASCADE 1000 SEMI-FRAMELESS ANGLE PIVOT SHOWER SCREEN INSTALLATION MANUAL

Thank you for purchasing a Decina Cascade Shower Screen.

This manual provides the correct steps & care advice for a safe & long lasting installation.

The Cascade's semi-frameless, angled, pivot door opens easily with an interior/exterior stainless steel handle. It's generous, angled internal design maximizes space in the bathroom. Install on tiled floor and walls or combine with a two-sided acrylic shower wall and an acrylic angled shower base [shower system].



CASSANGLEC 940(L) x 940(W) x 2000(H) mm

THIS PRODUCT MUST BE INSTALLED BY A QUALIFIED TRADESMAN



- ❗ Unpack & check the item is correct & not damaged. If there are any visible defects do not proceed with the installation & contact the place of purchase immediately. **ANY CLAIMS FOR DAMAGE WILL NOT BE ACCEPTED AFTER INSTALLATION.**
- ❗ Ensure there is a gasket between glass & metal components.
- ❗ Leave the plastic protectors on the glass corners for as long as possible & handle with care.
- ❗ In cold climates, warming the gaskets & seals with hot water or a hairdryer will assist with the installation.
- ❗ A risk assessment should be completed prior to commencing the installation to ensure safe practices are followed for the manual handling of the fragile glass.
- ❗ Instructions to install the shower tray are included with the shower tray.
- ❗ On symmetrical pieces of glass, the EZI Clean coating is only on one face. This face will have a sticker on it to identify it. This side must be installed on the wet side of the shower.

SAFETY EQUIPMENT REQUIRED FOR INSTALLATION



☐ Protective Clothing



☐ Foot Protection



☐ Eye Protection



☐ Hand Protection

TOOLS REQUIRED FOR INSTALLATION

ENSURE YOU HAVE ALL TOOLS FOR THE COMPLETE INSTALLATION BEFORE COMMENCING.

☐ Silicone Sealant

☐ Drill

☐ Level

☐ Rubber Mallet

☐ Pencil

☐ Phillips Screwdriver

☐ Tape Measure

☐ Cutting Pliers

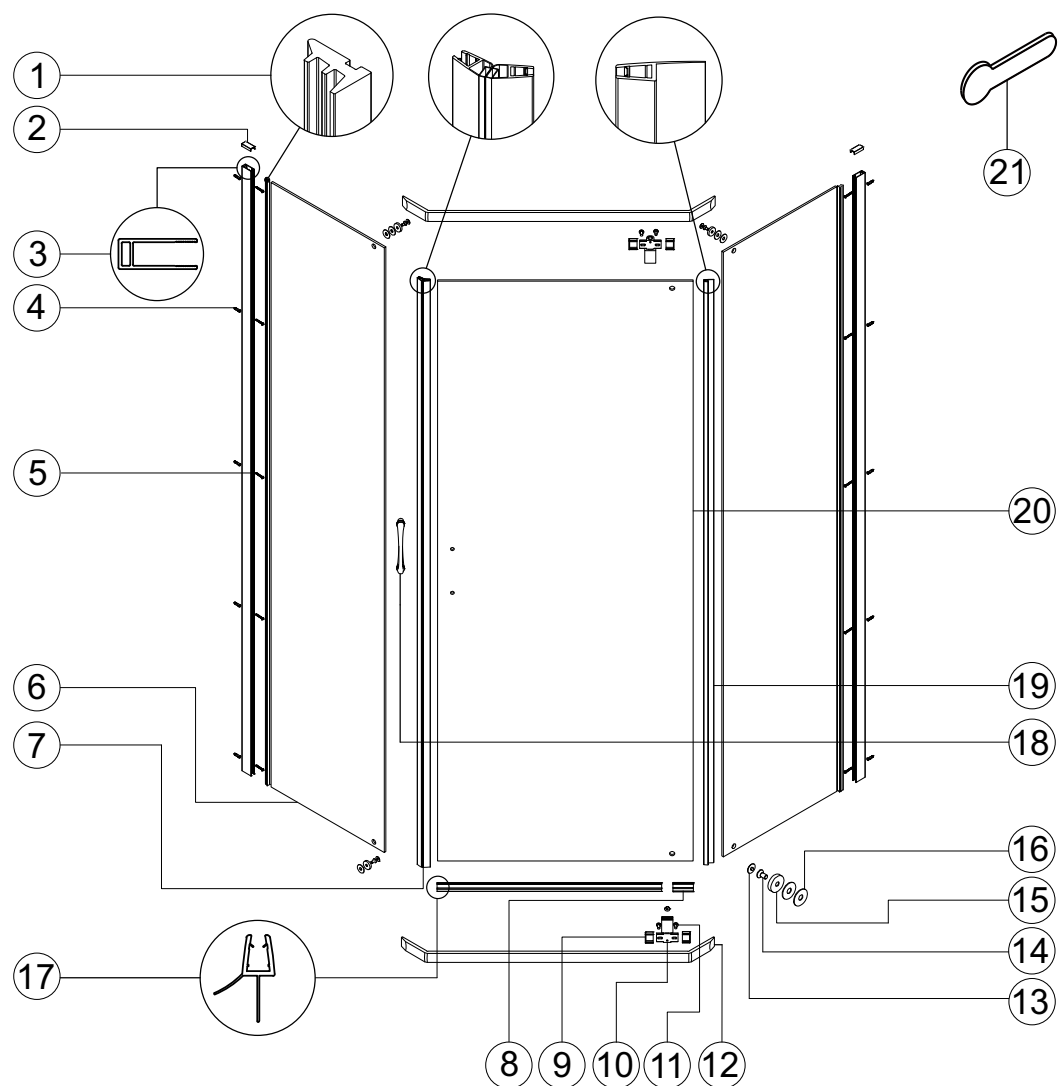
☐ Utility Knife

☐ 6mm (1/4") Drill Bit

☐ 3mm (1/8") Drill Bit

- Use the correct drill bit for the material being drilled. The 6mm drill bit is required for anchor fixing and the 3mm drill bit is required for screwing directly into the wall studs.
- As with all toughened safety glass, take care while handling and wear safety glasses and gloves for protection.

PARTS LIST

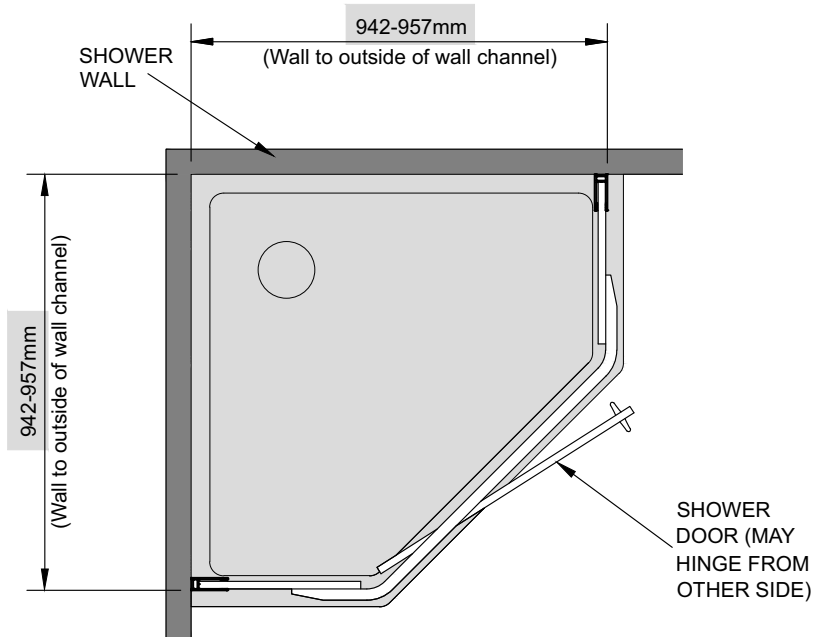


NO.	QTY	DESCRIPTION
1	2	Wall Channel Gasket
2	2	Channel Cap
3	2	Wall Channel
4	10	Wall Anchor
5	10	Phillips Head Screw ST4x40
6	2	Side Panel Glass
7	2	Magnetic Door Seal
8	1	Short Drip Strip
9	4	Hinge Back Cover
10	2	Hinge Assembly
11	6	Allen Head Screw M6x10

NO.	QTY	DESCRIPTION
12	2	Brace
13	6	Allen Head Screw Cover
14	4	Countersunk Allen Head Screw
15	4	Clamping Washer
16	8	Plastic Washer
17	1	Long Drip Strip
18	1	Handle
19	1	Hinge Side Door Seal
20	1	Door Glass
21	1	Gasket Insertion Tool

DETERMINING WALL CHANNEL LOCATION

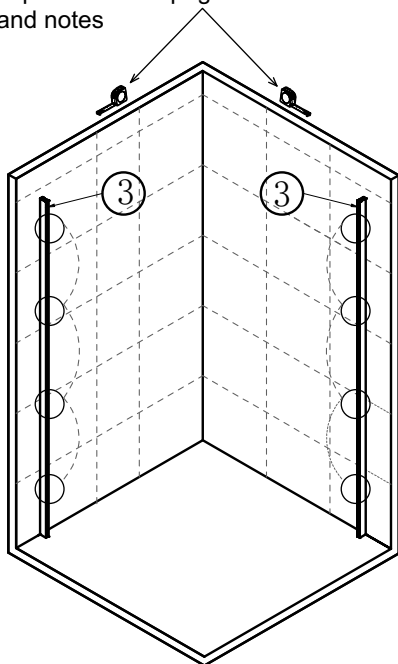
When commencing step 1 on the following page, please refer to this drawing and the instructions below to assist in the correct location of the wall channels.



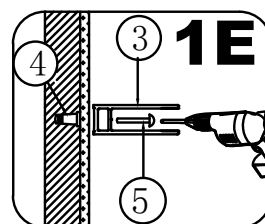
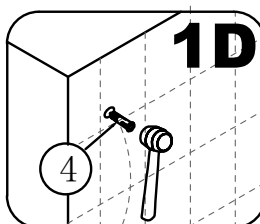
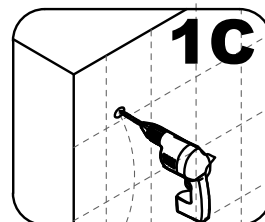
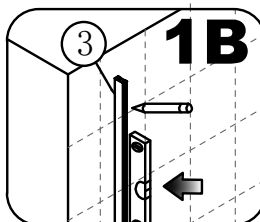
- Measure for the location of the outside edge of the wall channel from the inside of the shower wall. If a shower base is fitted, do not measure from the edge of the shower base to determine the position of the wall channel.
- If your wall and shower base are not at right angles the glass will not push fully into the wall channel at the top or bottom. This misalignment is acceptable if not exceeding 15mm, however the overall shower size will then increase by the amount of this misalignment.
- If the screen footprint does not turn out square while the aluminium braces are being installed (step 3), the glass can be pulled out from the full depth of the channel by up to 15mm to assist in squaring.

STEP 1.

Important - See page 4 for the dimensions and notes

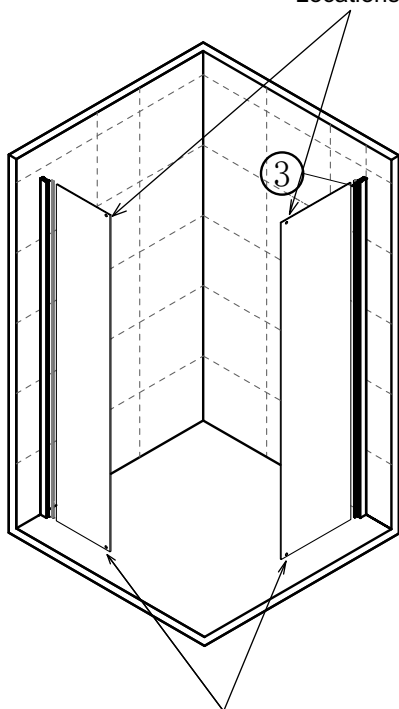


Install the wall channel.



STEP 2.

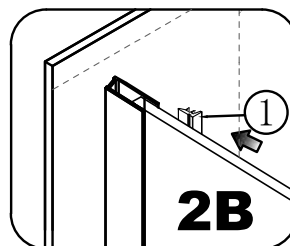
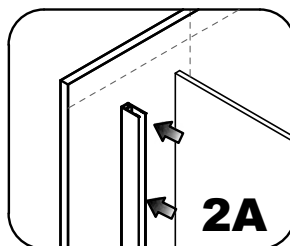
Note Hole Locations



Note Hole Locations

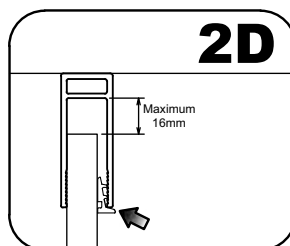
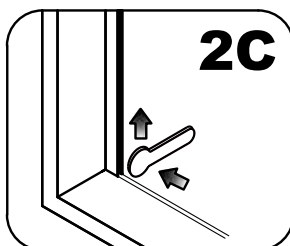
Important: Leave the corner glass protectors on until the last possible moment.

Install the fixed panel glass. There is a sticker to indicate which side has the EZI Clean coating. This side must go on the inside of the shower.



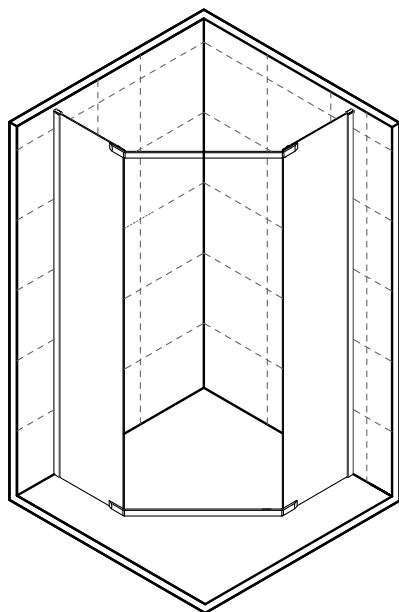
Start at the bottom and work up with the supplied roller tool.

Important: Seal must be fully inserted.



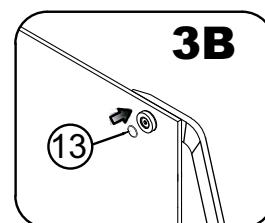
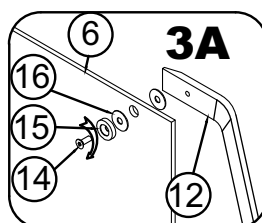
SHOWER SCREEN INSTALLATION STEPS

STEP 3

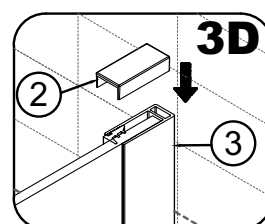
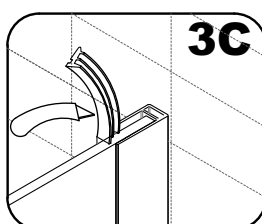


For white screens, run the screw in and out of the threaded holes in the brace before fitting.

Fit metal brace to the top and bottom.



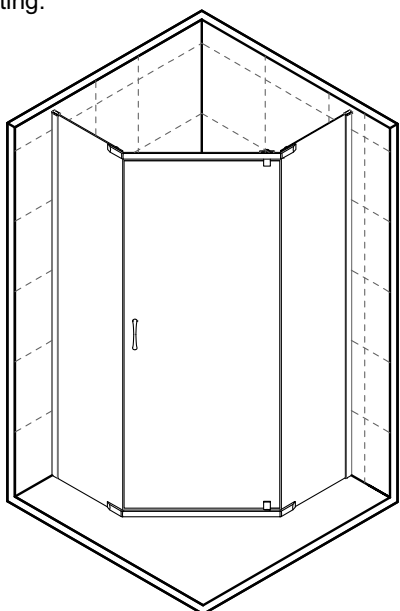
Fit cap to the wall channels.



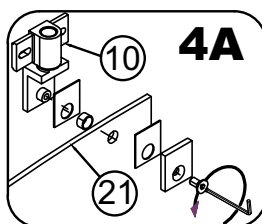
STEP 4

Important: Leave the corner glass protectors on until the last possible moment.

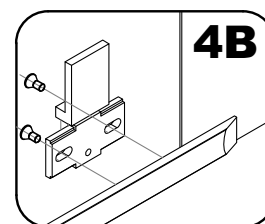
Like the side panels, there is a sticker on the door to indicate which side has the EZI Clean coating.



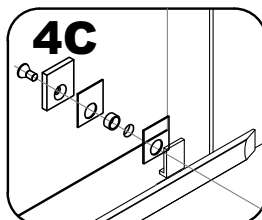
Install the top hinge to the door.



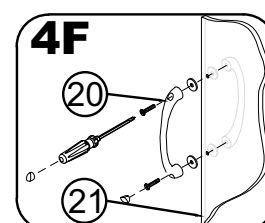
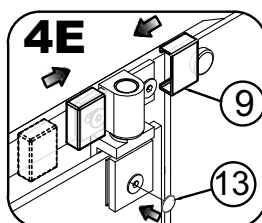
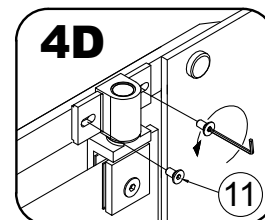
Install the bottom door hinge on the brace.



Install the door onto the bottom hinge.



Attach the top hinge to the top brace.

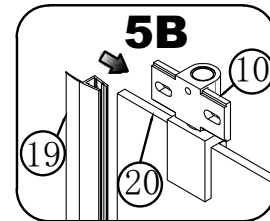
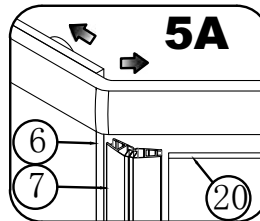
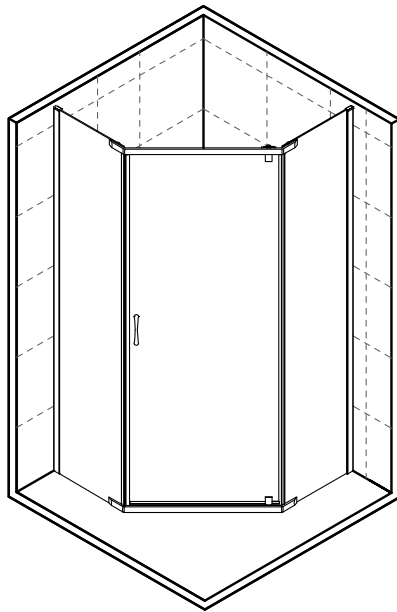


SHOWER SCREEN INSTALLATION STEPS

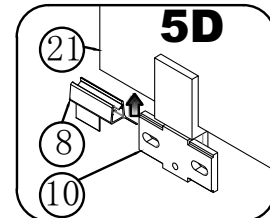
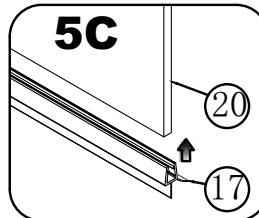
STEP 5

Note steps 5B to 5D show the seals being installed on the door with the frame removed for clarity.

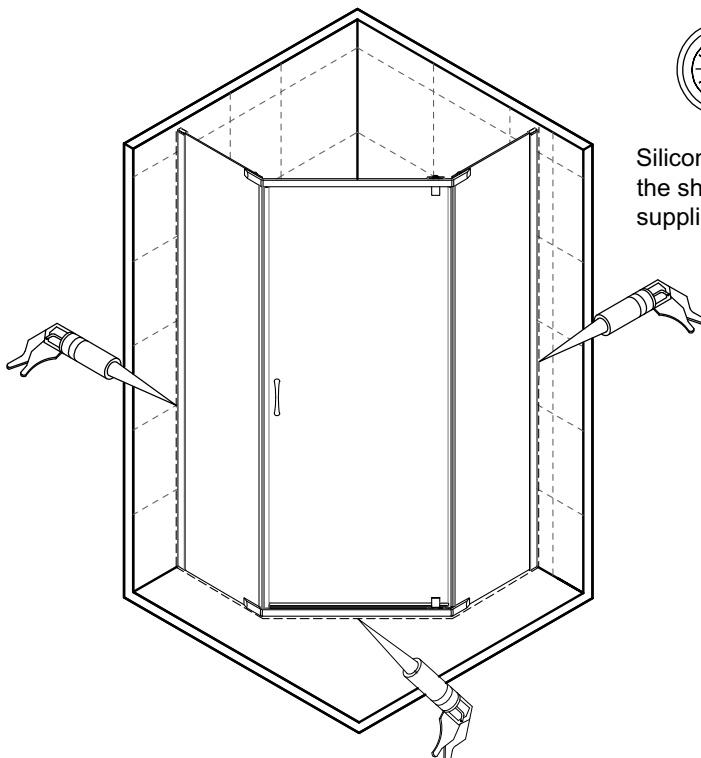
Cut the seals to the correct length before fitting.



Install the vertical door seals along the whole height of the door, and fit the bottom drip strips in between



STEP 6



Silicone inside and outside of the shower (silicone not supplied).

MAINTENANCE

The use of harsh or abrasive cleaners will cause deterioration of the EZI Clean coating. If water alone is not enough to clean the glass, Decina recommends the use of mild detergent solutions only. Damage caused by any improper treatment is not covered by the product warranty- refer to Warranty Conditions.

WARRANTY TERMS & CONDITIONS

All Decina products are manufactured to the highest standards and guaranteed to be free of defects, subject to the conditions outlined below. In addition to the statutory rights given under Australian Consumer Law, Decina offers the following extended warranty periods from the date of purchase or handover:

PRODUCT	WARRANTY	TERMS
CASCADE Semi-frameless Angle Shower Screen	5 YEARS	Replacement Products or Parts

The Decina warranty is only applicable when the product has been installed by a qualified tradesman, in full accordance with the installation instructions and statutory requirements. The warranty specifically EXCLUDES damages discovered AFTER installation.

Decina's responsibility for claims relating to impact damage ceases within 48 hours after delivery to the Decina re-seller's store.

The extended warranties only apply to faults or defects in the product arisen solely from faulty materials or workmanship in the products and does not apply to other defects for example from; damage, abuse, neglect or changes to the product supplied.

The warranty only extends to the supply of a replacement product or credit to the value of the purchase and excludes consequential damage ensuing from the product application or use. The responsibility for the removal and replacement of the product is with the installer and/or owner. Where the manufacturer "Decina" accepts that the product is at fault, the maximum contribution to the removal and replacement costs will be \$500.

Repairs of the Products other than by a Decina accredited or licensed service agent or technician are not covered.

In addition to this extended warranty, certain legislation (including the ACL) may give you certain rights which cannot be excluded, restricted or

modified, this extended warranty must be read subject to such legislation and nothing in this warranty has the effect of excluding, restricting or modifying those rights.

To make a warranty claim, please visit the Decina website decina.com.au/warranty-claim/ or email services@decina.com.au and attach the following documentation:

- Proof of purchase (original invoice from the supplier)
- Details of the warranty claim including the date of installation, installer's details and head contractors
- Your contact details

If the Product has not been installed, please contact Decina to inspect the Product. If the claim is accepted, the Product can be returned or exchanged. Note: The extended warranty only applies to the original owner and is not transferable. Decina reserves the right to charge a service fee for any staff called to attend premises where products have been installed and the warranty claim is not authorised.

Copyright Oct 2019. Decina Bathroomware Pty Ltd. ABN 39845 084 033

PLEASE LEAVE THIS MANUAL WITH THE END USER

DECINA
DISCOVER INDULGENCE

DECINA.COM.AU 1300 DECINA   

*Warranty T&Cs apply. All dimensions are nominal & subject to manufacturing tolerances & may vary +/-5mm therefore we strongly recommend installation does not occur until after delivery. Decina reserves the right to modify or change models without notice. Please confirm all particulars with your sales consultant prior to purchase. For further information and for warranty T&C's, please visit decina.com.au