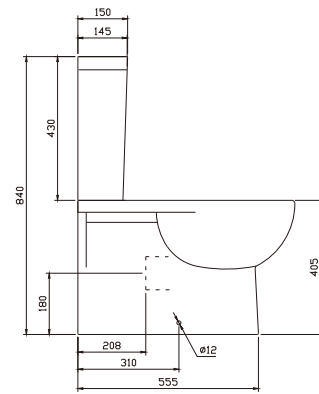
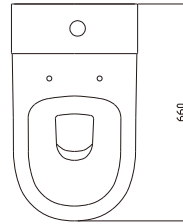
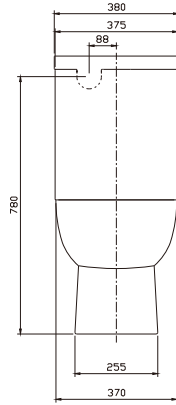


INSTALLATION INSTRUCTIONS

ADATTO

BACK TO WALL UNIVERSAL TOILET SUITE ADTSWFR



PRE INSTALLATION CHECKS - THIS PRODUCT MUST BE INSTALLED BY A LICENSED PLUMBER

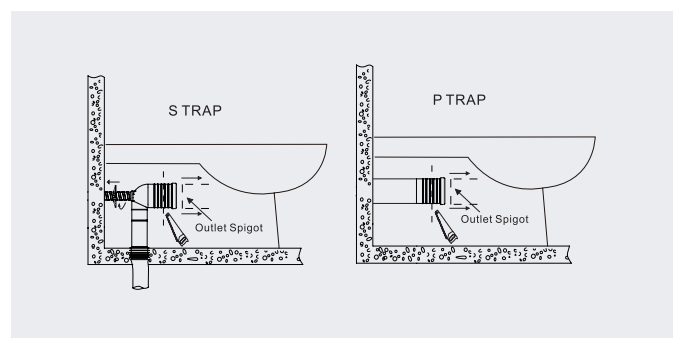
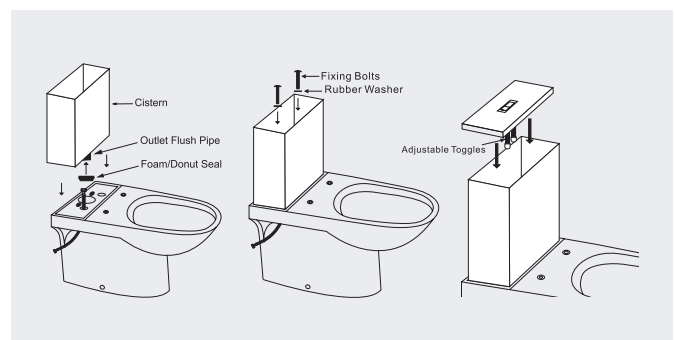
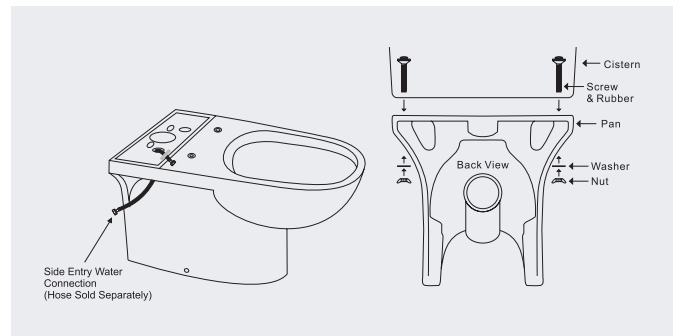
1. Check that the toilet is compatible with your current set out requirements. This Overture has a set out distance of 90-180mm for S Trap and 180mm for P Trap.
2. This toilet comes with an S Trap Vario Bend. P Trap connection IS NOT PROVIDED.
3. Before installing your new toilet please make sure you have received all items and that they are undamaged. Any damage claims after installation WILL NOT BE ACCEPTED.
4. Check that the floor and wall are level and perpendicular.
5. This product is configured for bottom/side entry. For rear entry you need to purchase a rear entry kit (sold separately).

INSTALLATION

1. Feed a flexible connecting hose (sold separately) through the side entry and through the top of the Pan.
2. Floor Fixing Kit - measure and install the floor fixing kit (see instructions in kit). DO NOT INSTALL the external locking SS screw at this stage.
3. Ensure the Foam/Donut Seal is placed over the Outlet Flush Pipe on the base of the Cistern.
4. Connect the Water Supply Hose to the base of the Cistern.
5. Connect the Cistern and Pan together and lock into place using the fixing bolts (the outlet flush valve can be removed to assist with the bolt assembly by turning it anti clockwise and then lifting it out).
6. Insert the Vario bend onto the Pan Outlet Spigot. If trimming is required work out the measurement and mark the cutting line.
7. Check the measurements and then cut the Vario Bend to the correct length.
8. Place Rubber Seal and Cover over the front of the Vario Bend and install, ensure that the sewer connection is connected correctly and a good seal has been achieved.
9. Install the Flush Buttons onto the Cistern lid.
NOTE - Button toggles can be adjusted
NOTE - This toilet is not suitable to be used with some offset collars and slab adapters.

Before fixing the toilet to the floor, connect the water supply and ensure that the toilet is working correctly by doing several flush tests, checking for leaks. Once you are confident that there are no leaks and the toilet is working correctly install the Pan into the Floor Fixing Kit provided and apply a bead of Wet Area Silicone around the base of the Pan (you will need to allow for the recommended drying time). Install the seat after the Silicone has dried.

Refer to Seat installation instructions.



PRODUCT CARE & MAINTENANCE

To maintain your Decina Toilet Suite for the longest possible period we recommend they are cleaned with a mild household detergent or warm soapy water and cleaned with a soft cloth. Abrasive cleaners should be avoided on the toilet seat as this can remove the gloss surface. Ensure the seat hinges and bolts are regularly checked and tightened, as they can loosen over time. Avoid any hot, sharp or hard objects falling on to the plastic seat which can cause scratches and discolouration. The seat is resistant to most household products but some chemical products such as shave lotion, hair spray, nail polish and remover can stain the toilet seat and must be washed off immediately.

WARRANTY CONDITIONS & WARRANTY PERIODS

All Decina products are manufactured to the highest standards and guaranteed to be free of defects, subject to the conditions outlined below. In addition to the statutory rights given under Australian Consumer Law, Decina offers the following extended warranty periods from the date of purchase or handover:

PARTS	WARRANTY	TERMS
Vitreous China Cistern & Pan	10 Years / 1 Year	Replacement products / Parts & labour
Seat, lid & hinges	1 Year	Replacement products or parts
Button assembly	1 Year	Replacement products or parts
Internal systems (valves)	1 Year	Replacement products or parts

Parts subjects to wear and tear i.e. Seals and rubbers are not covered by Warranty.

The Decina warranty is only applicable when the product has been installed by a qualified tradesman, in full accordance with the installation instructions and statutory requirements. The warranty specifically EXCLUDES damages discovered AFTER installation.

Decina's responsibility for claims relating to impact damage ceases within 48 hours after delivery to the Decina re-seller's store.

The extended warranties only apply to faults or defects in the product arisen solely from faulty materials or workmanship in the products and does not apply to other defects for example from; damage, abuse, neglect or changes to the product supplied.

The warranty only extends to the supply of a replacement product or credit to the value of the purchase and excludes consequential damage ensuing from the product application or use. The responsibility for the removal and replacement of the product is with the installer and/or owner. Where the manufacturer "Decina" accepts that the product is at fault, the maximum contribution to the removal and replacement costs will be \$500.

Repairs of the Products other than by a Decina accredited or licensed service agent or technician are not covered.

In addition to this extended warranty, certain legislation (including the ACL) may give you certain rights which cannot be excluded, restricted or modified, this extended warranty must be read subject to such legislation and nothing in this warranty has the effect of excluding, restricting or modifying those rights.

To make a warranty claim, please visit the Decina website www.decina.com.au/warranty-claim/ or email services@decina.com.au and attach the following documentation:

- Proof of purchase (original invoice from the supplier)
- Details of the warranty claim including the date of installation, installer's details and head contractors
- Your contact details

If the Product has not been installed, please contact Decina to inspect the Product. If the claim is accepted, the Product can be returned or exchanged. Note: The extended warranty only applies to the original owner and is not transferable.

Decina reserves the right to charge a service fee for any staff called to attend premises where products have been installed and the warranty claim is not authorised.