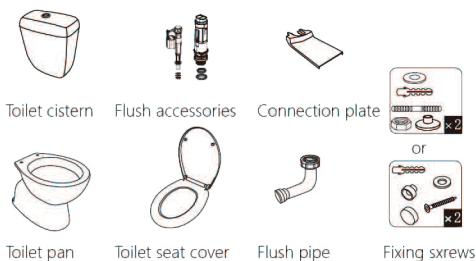


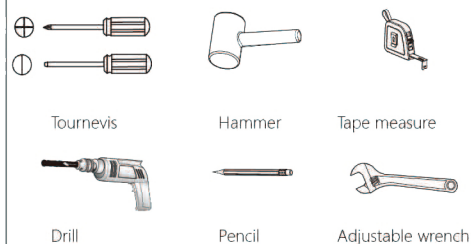
## NOVARA CONNECTOR TOILET SUITE INSTALLATION INSTRUCTIONS

Installation to be in accordance with AS/NZS3500.1 and AS/NZS3500.2

### Link Toilet Suite Includes



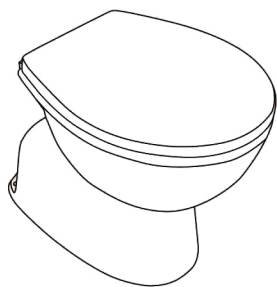
### TOOLS (Not Included)



### NOTICE

1. Make sure the water supply valve is shut off before installation
2. Remove old bolts, silicon, putty ect from base area

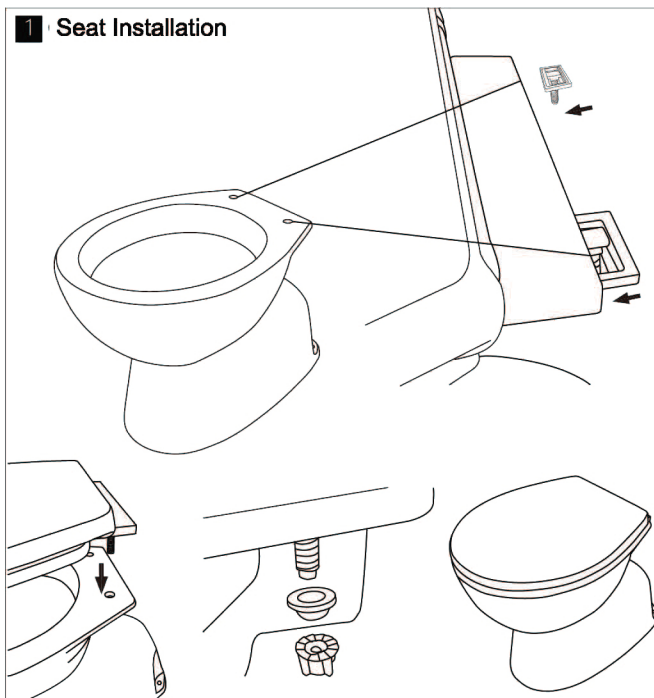
Place the seat cover follow the instructions in the seat cover package



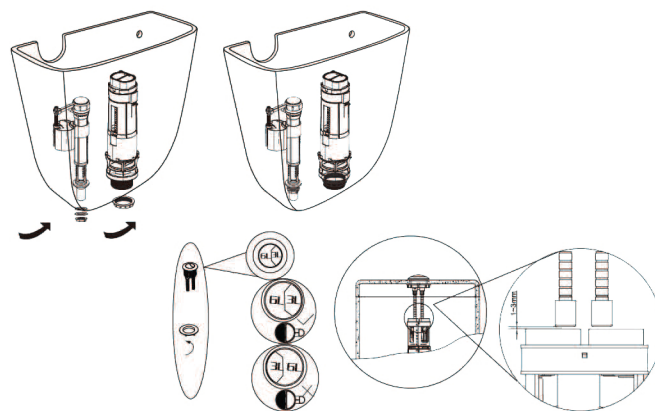
### MAINTENANCE

Use soft moist cloth for cleaning of the toilet, cistern, seat and lid. Do not use abrasives and hard cloth. Regular cleaning with the soap solution is recommended. Do not use strong bleaching agents. In case acid liquids penetrate on the surface remove them immediately with soft cloth.

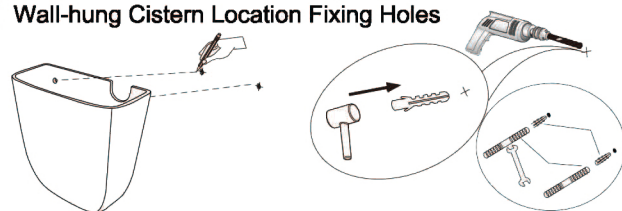
### 1 Seat Installation



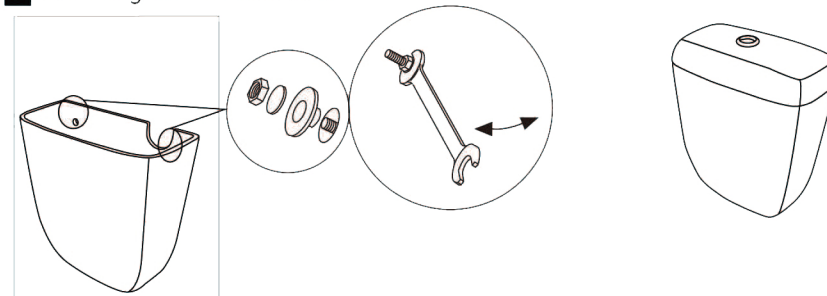
### 2 Flush accessories installation



### 3 Wall-hung Cistern Location Fixing Holes



### 3 Wall-hung cistern installation



### 4 Connector Plate & Flush Pipe (Cut to Required Length)



### 5 Screw Mounting for Pan

