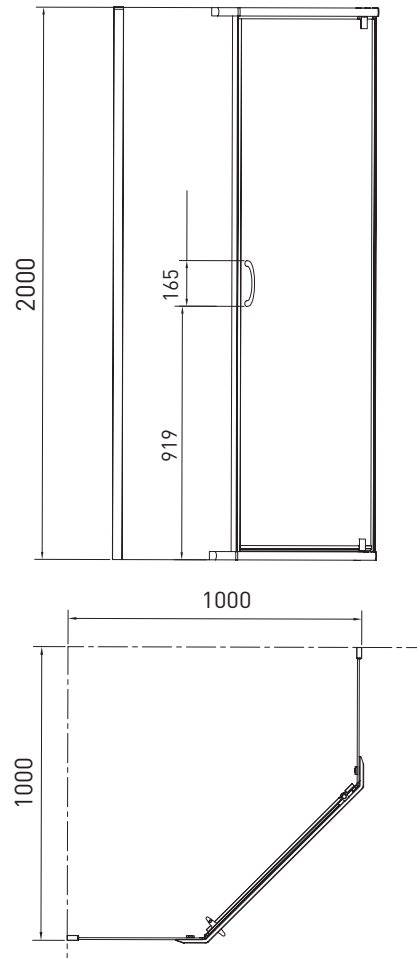


CASCADE ANGLED

Shower System



CASCADE ANGLED SHOWER SYSTEM

The semi-frameless Cascade angled shower is two metres high, manufactured from 6mm toughened glass. The Cascade angled shower system comes with a Luna angled shower base and acrylic shower wall to create a seamless, leak resistant, low maintenance shower area.

SIZE (l)x(w)x(h)

- 1000 x 1000 x 2000 (mm)*

*Adjustable at the wall from a further +15mm

PRODUCT CODE

- CASYSANGLED C ~ Chrome finish
- CASYSANGLED W ~ White finish

*Adjustable at the wall from a further +15mm

NET WEIGHT

- 97.0 kg

KEY FEATURES

- Cascade angled shower screen
- Decina acrylic 2-sided shower wall
- Luna angle shower base with rear chrome waste
- An easy install gasket to wall system (no pop rivets required)
- Wall channel finishing caps for easy cleaning
- Made to AS/NZ Standard: AS1288/2006
- Magnetic door seal and drip strips to avoid leaks
- All fittings are chrome steel, not plastic
- 6mm toughened safety glass
- Doors can be reversed to open left or right
- EZI Clean screen coating for easy cleaning

WARRANTY:

- Shower Screen - Five year warranty
- Shower Wall - Five year warranty
- Shower Base - Ten year warranty

Conditions apply please see website for details