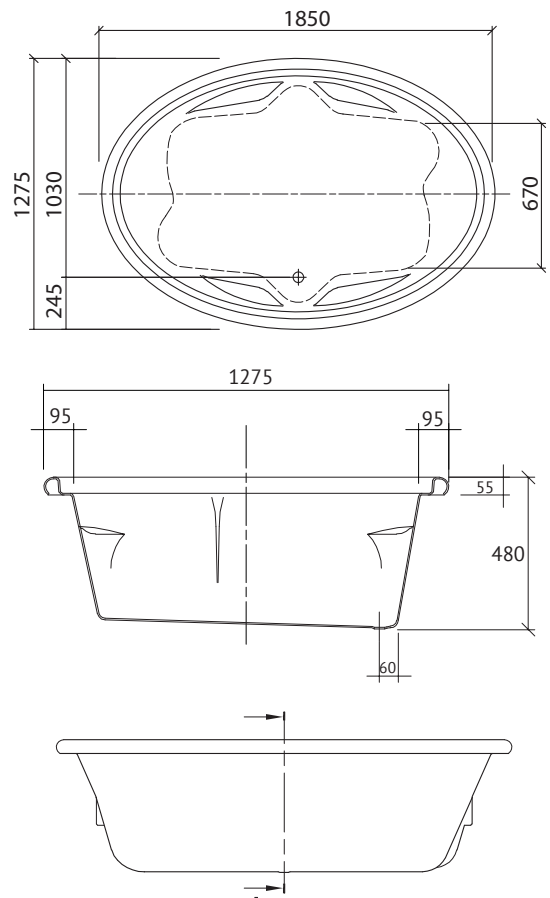


## DUO

*Island Bath*

## DUO ISLAND BATH

The Duo is a classical oval design for larger bathrooms. Arm rests, moulded back supports and large capacity lumbar jets combine to provide superb comfort for two bathers.

## SIZE (l)x(w)x(h)

- *DU1850W* ~ 1850 x 1275 x 485 (mm)

## NET WEIGHT

- 28 kg

## CAPACITY\*

- 295 litres

\*200mm below bath rim

## FEATURES

- Island style bath
- Made in Australia
- Made to AS/NZ Standard: 2023/1995
- Manufactured from premium sanitary grade acrylic
- High gloss white
- Molded arm rests & lumbar support

## ACCESSORIES

- Sienna Headrest
- Overflow

## WARRANTY:

- Fifteen year warranty -  
Conditions apply please see website for details